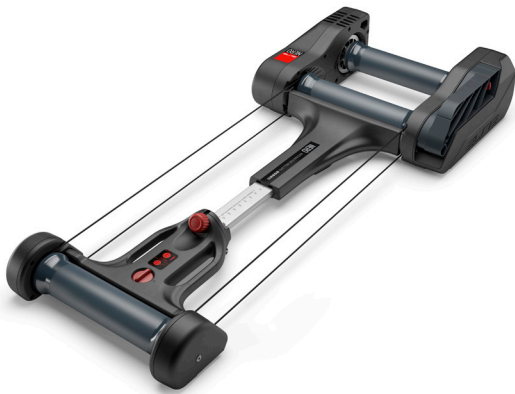


Nero



Nero

The smart roller that changes the rules.



Free motion, total control

Nero is the interactive roller that blends the round, road-like pedal stroke of parabolic rollers with the **interactivity of smart trainers**.

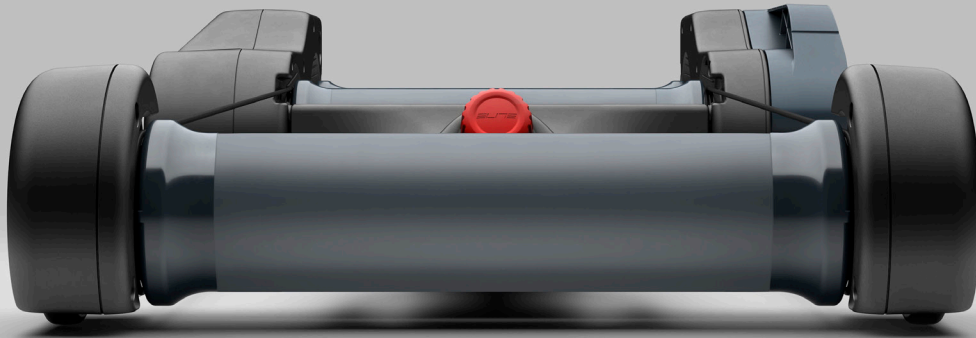
An evolution of Quick-Motion, **Nero** inherits its **floating system** and **foldable structure** for comfort and convenience, then takes it further with **dual rear flywheels**, **gradient simulation up to 7%**, and **full connectivity via ANT+™ and Bluetooth®**. Compatible with road, gravel, and mountain bikes, Nero delivers a realistic, smooth, and engaging training experience from day one. A **12-month subscription to Elite's My E-Training app** is included so you can start right away.

Nero is a roller designed for **training with the bike free**, with no frame clamps. The **parabolic rollers** help maintain a central line, while the **frame's fore-aft floating motion** absorbs sharper inputs. The result is a stable, natural, continuous pedal stroke that trains balance and improves technique—even in more dynamic phases.



Rear flywheels: more inertia, more realism

Nero is one of the few rollers with **two flywheels on the rear drums**. Each flywheel weighs 2.7 kg and increases system inertia, making the **pedal stroke rounder and more consistent**. Even at low cadences or during recovery, the feel remains steady and realistic—similar to riding on the road.



Extended compatibility

Nero is compatible with **road, gravel, and MTB bikes**. The front roller adjusts across **11 positions** to fit frames with a **wheelbase between 944 mm and 1144 mm**. No clamps, no adapters: hop on and ride.

Truly smart rollers

Nero is among the very few rollers that are **fully smart**. It connects via **ANT+™ FE-C and Bluetooth® FTMS** to major cycling training apps like **My E-Training, Zwift, MyWhoosh, Rouvy, Kinomap, Bkool**, and many others, automatically controlling resistance according to the selected route or workout. Nero simulates **gradients up to 7%**, adapting in real time to the required effort.

Ready when you are

Nero is built for the realities of consistent training. It **folds into three sections** to halve its footprint, and includes a **carry handle** for easy transport. The **retractable step** makes mounting easier, especially in tight spaces or with road bikes. Every detail is designed for practicality, speed, and everyday training rhythms.



Features

Home Trainer Type	Interactive direct transmission with electronically managed magnetic brake
Wireless Communication	ANT+™ (FE-C, Power, Speed&Cadence) and Bluetooth (FTMS, Power and Speed&Cadence)
Max slope simulated	7%
Max power	270 Watt (20km/h) - 760 Watt (40km/h)
Control via	Smartphone, tablet, bike computer, sports watches, Windows and Mac. Computer ANT+™ and/or Bluetooth
Compatible with	My E-Training software & app Zwift, Trainer Road, Kinomap and more
Bike compatibility	Road, Gravel, Mountain, and City bikes. The front roller adjusts across 11 positions to suit frames with a wheelbase between 944 mm and 1144 mm.
Flywheel	2 flywheels, 2,7 kg / 5,95 lbs each
Connection indicator	Power source, ANT+ and Bluetooth (3 LED lights)
Firmware update capacity	Yes
Includes	12-month free subscription to My E-Training software & app

Specifications

Power supply data	Input 100-240 volt 50-60 hz 0,6A - output 12 volt 1,5A
Open size (L x W x H)	630 x 1400 x 204 mm / 24,80" x 55,11" x 8,03"
Closed (L x W x H)	630 x 470 x 304 mm / 24,80" x 18,50" x 11,97"
Weight	18 Kg / 39,68 lbs
Max Load	110 kg / 242,50 lbs

